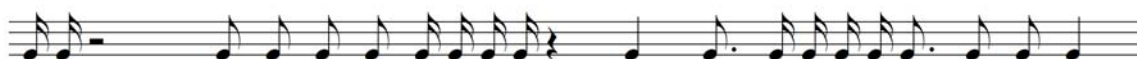


Name: _____



NOTATION OF TIME AND RHYTHM

1. Set the following tone durations correctly in a **6/8** time signature, add bars and beaming –
(20) Zet de volgende toonduren op correcte wijze over in **6/8**, voeg maat- en waardestrepen toe



answer – antwoord:



2. Notate the correct missing rest duration above each place marked with a star * –
(10) Voeg de juiste ontbrekende rustwaarde toe boven elke plek gemarkeerd met een ster *



3. Which time signature and structures are represented by the following notated 1-bar examples, and are these binary, ternary or complex? –
(20) Welke maatsoorten en structuren zijn in de volgende genoteerde 1-maats voorbeelden voorgesteld, en zijn zij binair, ternair of samengesteld?



Name: _____



NOTATION OF PITCH, INTERVALS AND TRIADS

4. Notate the enharmonic equivalents after each of the following pitches –
 (10) Noteer de enharmonische equivalenten na elk van de volgende tonen

notate notate notate notate notate

5. Notate the requested intervals *above* the notated pitches –
 (10) Noteer de gevraagde intervallen *boven* de genoteerde toonhoogtes

M3 G3 m2 k2 P4 R4 M6 G6 M7 G7

6. Add 2 tones: notate the requested triads in close root positions *above* the notated pitches –
 (10) Voeg 2 tonen toe: noteer de gevraagde drieklanken in nauwe grondligging *boven* de genoteerde toonhoogtes

minor mineur Major Majeur Flat 5 Hard verminderd diminished verminderd Augmented Overmatig

7. Add 2 tones: notate the requested triads in close inversions *below* the notated pitches –
 (10) Voeg 2 tonen toe: noteer de gevraagde drieklanken in nauwe omkeringen *onder* de genoteerde toonhoogtes

maj 6-4 min 6 b5 6-4 hard verm. 6-4 aug 6 overm 6 dim 6 verm 6

Name: _____



NOTATION OF SCALES AND MODES

8. Give the name below each of the following scales and modes –
 (10) Geef de naam onder elk van de volgende toonladders en modi

9. Add sharps and flats at will to notate each of the following requested scales and modes –
 (10) Voeg naar believen kruisen en mollen toe om elk van de volgende gevraagde toonladders en modi te noteren

Minor melodic	Minor harmonic	Lydian	Mixolydian	Dorian
Mineur melodisch	Mineur harmonisch	Lydisch	Mixolydisch	Dorisch

Major	Natural minor	Phrygian	Aeolian	Locrian
Majeur	Natuurlijk mineur	Phrygisch	Aeolisch	Locrisch

10. Transpose the melody and chords for performance by B flat soprano sax –
 (15) Transponeer de melodie en akkoorden voor uitvoering door sopraan saxofoon in Bes

Dm Fmaj7 Gm7 Dm7 A7 B^b Dm

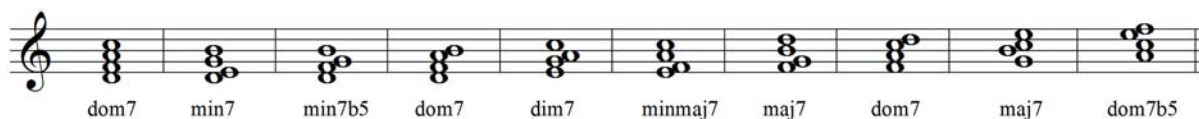
Name: _____

CHORDS AND SEVENTH CHORDS

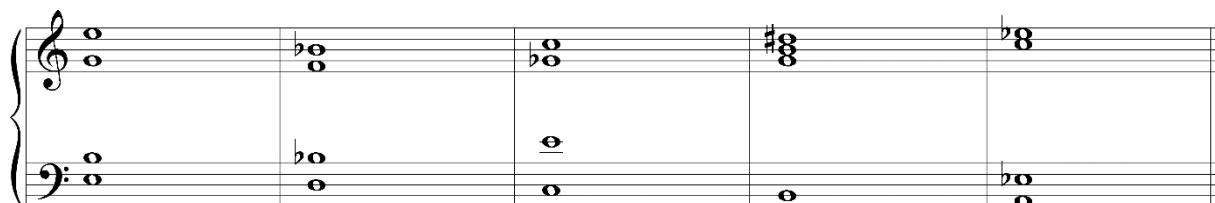
11. Give the correct name or symbol of the following seventh-chords –
 (10) Geef de juiste naam of het juiste symbool van de volgende septiemakkoorden



12. Add sharps and flats at will to construct the requested seventh-chords (in inversion) –
 (10) Voeg naar believen kruisen en mollen toe om de gevraagde septiemakkoorden (in omkering) te construeren



13. Determine the symbol and exact position of the following chords. Root position, or which inversion? Closed, open or mixed position? Which soprano position: 1, 3 or 5? –
 (15) Bepaal het symbool en de exacte ligging van de volgende akkoorden. Grondligging of welke omkering? Nauwe, wijde (verspreide) of gemengde ligging? Welke sopraanligging: 1, 3 of 5?



Name: _____

OPEN QUESTIONS 1
(min. 25 – max. 50 words each)

14. Explain the following signature of J.S. Bach; which clefs and nomenclature did he use?
(10) Leg de volgende ondertekening van J.S. Bach uit; welke sleutels en naamgeving gebruikte hij?



15. Name the 5 keys (tonalities) in which the C major triad diatonically occurs, and indicate on which degrees! –
(10) Noem de 5 toonsoorten waarin de C groot drieklank laddereigen voorkomt, en geef aan op welke trappen!

Name: _____



OPEN QUESTIONS 2
(min. 25 – max. 50 words each)

16. List the complete order of bars as they should be played in full in the following form scheme
(20) Noem de complete volgorde van de maten op zoals ze voluit dienen te worden gespeeld in het volgende vormschema

A musical form scheme diagram consisting of a single staff with 8 measures. Measures 1 and 2 are grouped together with a bracket above labeled "1.". Measures 3 and 4 are grouped together with a bracket above labeled "2.". Measures 5 and 6 are grouped together with a bracket above labeled "1.". Measures 7 and 8 are grouped together with a bracket above labeled "2.". Below the staff, the text "D.S. al Fine" is centered.

A musical form scheme diagram consisting of a single staff with 16 measures. Measures 9, 10, and 11 are grouped together with a bracket above labeled "1.". Measure 12 is marked with a double bar line and a repeat sign. Measures 13 and 14 are grouped together with a bracket above labeled "1.". Measures 15 and 16 are grouped together with a bracket above labeled "2.". Below the staff, the text "D.C. al Fine" is centered under measures 9-11, and "Fine" is centered under measures 15-16.